

## Y760 - Youth Coal Harbour® Soft Shell Jacket

### GARMENT MEASUREMENTS

Finished Measurements in Inches

Size	S	M	L	XL
Chest	17	18	19	20
CB Length	20	22	24	26
Sleeve Length	26	27	28 1/2	30

**Chest** is measured 1" down from the armhole(1/2 measurement). **CB length** is measured from the center of the back neck seam to the hem. **Sleeve length** is measured from the center back neck seam to the end of the cuff.

### YOUTH SIZING CHART

	S	M	L	XL
Numeric Size	6-8	10-12	14-16	18-20
Chest	26-28	28-30	30-32	32-35



## Coal Harbour® Soft Shell Youth Jacket - Y760

### Product Features:

- Exterior: 94/6 polyester/spandex stretch woven shell
- Interior: 100% micro fleece liner with laminated insert
- 3000mm/3000g/m<sup>2</sup> waterproof breathable fabric
- Wind resistant and water repellent
- Storm flap with soft chin guard and Lycra®
- Easy grip pull with "Coal Harbour®" logo
- Zippered pockets with zipper garages
- Lycra® trimmed cuffs
- All zippers are YKK
- Right chest zippered pocket

Youth sizes **S (6-8), M (10-12), L (14-16), XL (18-20)**

Corresponding Styles:

Soft Shell Jacket - J760

Soft Shell Ladies' Jacket - L760

### Available Colours and PMS Colours

Textile fabric colours are subject to dye lot variation and will not be exact match to print pantone reference

Black



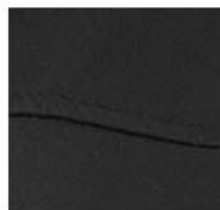
Black 6C

Navy



533C

### Fabric Features:



## Smart Uses:

A perfect mix of technology and style, the Soft Shell Jacket is the perfect addition to any uniform all year round!

- Schools/camps
- Donations/door prizes
- Team Uniforms
- And much more!